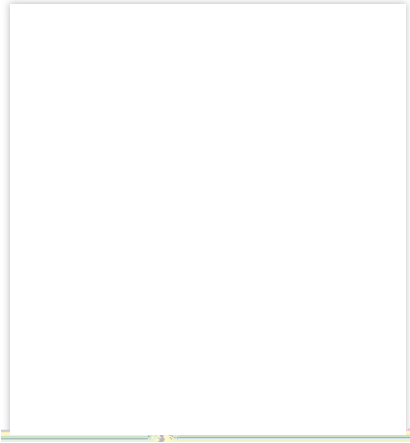


 **FAIRFAX**
MULTI-



Thank you for your interest in Bournville All Through School. Bournville is a traditional school with a rich history rooted in the community it serves and has an ambition to become one of the leading schools in the West Midlands, indeed the country.

We are an inclusive school where everyone works together to be the very best they can be. The school is a tolerant community that welcomes all and celebrates diversity.

Our ethos is simple. We expect a lot of our students – we expect them to work very hard to fulfil their potential and reach the highest standards through high quality teaching and caring support. We aim to keep them safe and happy so that they discover and learn new things, and achieve whilst at school. We do all we can to prepare them for the next steps in their education and future quality employment, equipping them to be able to lead a fulfilling and successful life. We aim to provide an outstanding platform for them to be the best they can be.

Our standards are high. We expect all students to wear our full uniform, attend well, behave appropriately and support each other. We expect them to give their best effort and believe that there is dignity in hard work.

Our primary opened in September 2016 creating the first all through school in South Birmingham. As an all through school we are uniquely placed to offer many benefits to our students. Primary children will be able to access the sort of specialist teaching available in

benefit (f)-80 (r)13o(em bec)9 tandarf(e)10 (a)-2 iali (e (suc)8 ((haIT(.9 (,)JJO Tw 0 -1.25 TdM(lupec20.9 (Deb

Wlook

How do we assess our children?

Bournville School offers students the opportunity to flourish in a creative, stimulating and aspirational learning environment.

At Bournville we provide learning opportunities that challenge and motivate all our students to learn. There is frequent assessment in lessons, this may be in the form of questioning, structured talk or feedback. Assessment helps the teacher to shape the learning so it meets the needs of all students.

Students are placed in teaching groups that are appropriate to their needs and abilities.

There are also formal assessments each year for all students and year groups. The range of assessments help teachers to identify what students know and can do so to inform intervention and support.

Learning is celebrated throughout the year through our reward system 'Griffins'. Learning is also celebrated in assemblies, displays around the school and through contact with parents.

In order to ensure every student is making at least age related progress we provide support and guidance to help our students achieve their challenging targets.

“

Education is the most powerful weapon which you can use to change the world

Nelson Mandela



EC F L AFE
EADY
E



What will our children learn?

At Bournville we aim to develop articulate, resilient and ambitious students, regardless of background, with the knowledge, skills and attitudes to excel in modern Britain.

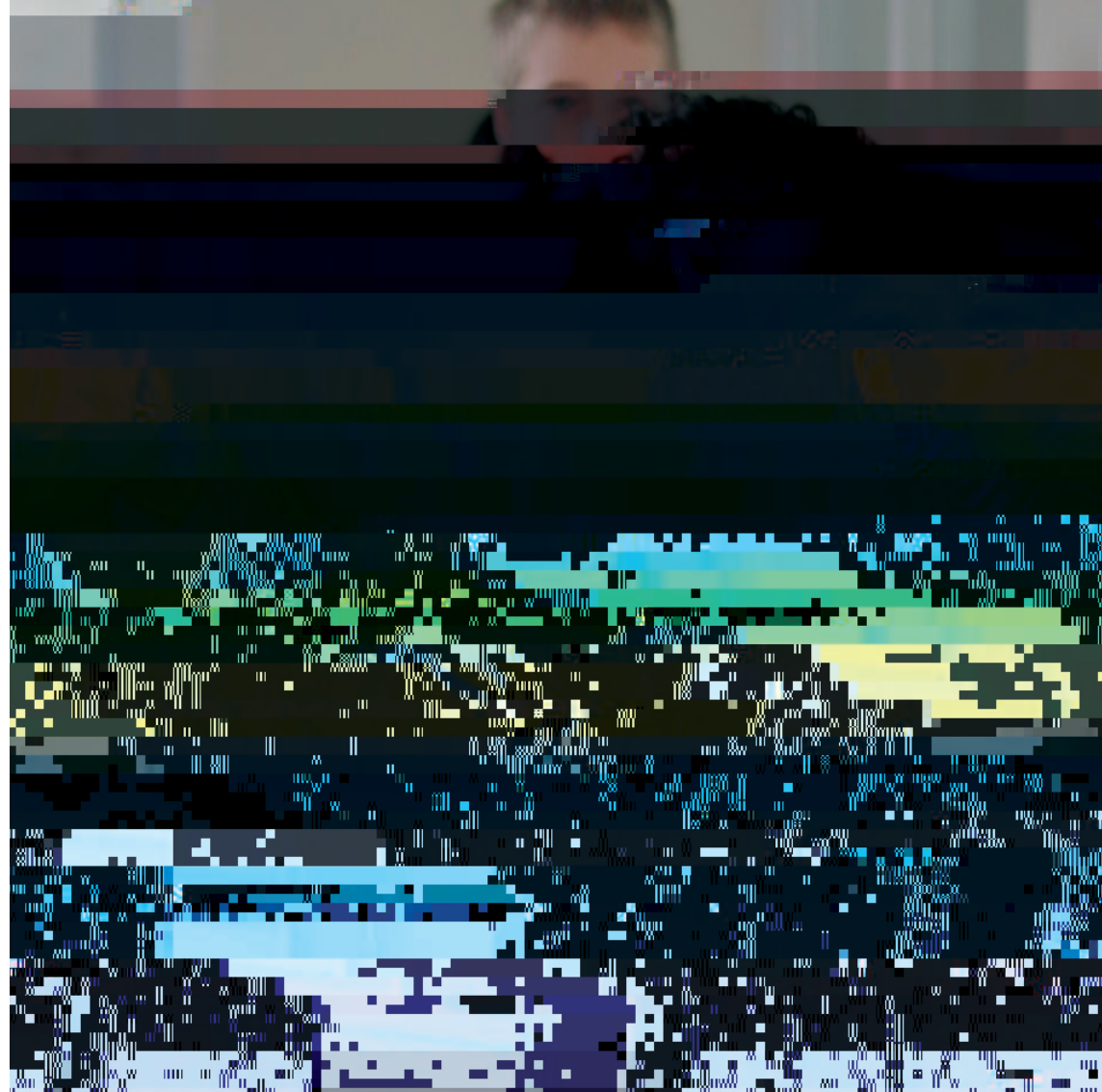
The purpose of the curriculum is to enable students to:

- Acquire knowledge and skills relevant to adult life and a world of rapid and continuous technological and social change
- Develop a life-long love of learning
- Develop personal and moral values, respect for shared values and for other cultures, religions and ways of life
- Acquire sound numeracy and literacy skills
- Develop and acquire the qualities and qualifications necessary to enable them to reach their potential, progress to the next stage in their chosen learning or career pathway and compete with others nationally.

In years 7, 8 and 9 students study a broad and balanced curriculum but with an emphasis on English, Mathematics, Science, Spanish, and Humanities. Students are also encouraged to thrive in the performing and creative arts through subjects such as Art and Drama.

In years 10 and 11 our curriculum is diverse and personalised. All students will study, English Literature, English Language, Mathematics and the Sciences (with the option to study Triple Science), RS, PSHE and core PE. The majority of students will also study Geography and / or History, while others will receive further tuition in English. Students are then able to study three further subjects, choosing from a range suited to their particular abilities and needs, including a number of vocational subjects.

and reflection in these sessions. A highlight of our assembly programme is when students share their achievements and successes in year team assemblies. These celebration events help to create a sense of community that makes our school a supportive and stimulating place to grow

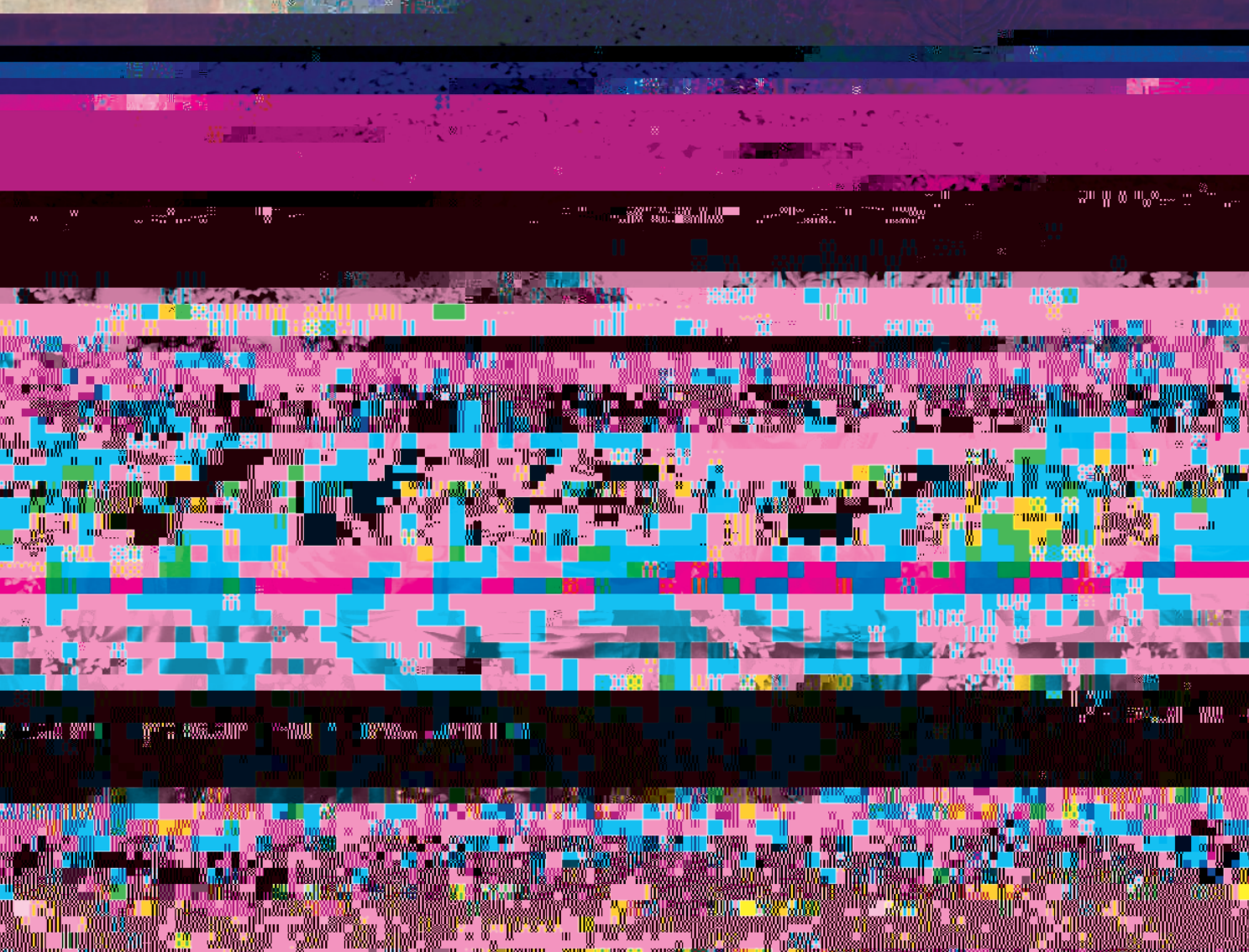




B
(M C).
D
w
□

At Bournville homework is an integral part of the learning experience. We set high standards and expect all homework to be completed to the best of a student's ability and to be handed in on time. Students can access Show my Homework, My Maths, PIXL etc. from home at any time so that learning can continue outside the





How do we communicate with parents?

At Bournville, we believe that working with parents will enable our students to be happy and successful. We invite all year 7 parents to attend a tutor meeting in the first half term in October to discuss how well their child has settled into life at Bournville.

We understand the importance of keeping parents well informed so that we can work together and ensure every



What do we hold?

Continual growth is key to Bournville's success, we are a reflective and hard-working community.

We are excited about the future opportunities open to us, being a part of the Fairfax Multi Academy Trust (FMAT).

The school is going from strength to strength; we hope that you will join us on this journey.

We believe school is about developing the whole child and their individual brilliance. Together, the students and staff work hard, think and reflect so as to ensure continuous growth. We believe that hard work and effort is a key driver in this, our

“

We learn everything
every day. *Sofia*

The e a e load of cl b o
a end af e chool *Esta*

If o o achie e g ea ne ; Bo n ille
i he lace o be. *Frank*

Teache ca e abo ha y o
ha e o ay. *Tag*

This school is really good
because everyone is
of everyone. *Syed*

Q o e f o m o
c en den :

I like this school
because everyone
is a good and helpful
if you need help.
Mohammed

The den a e kind
Tara

The school is good because everyone has an open mind-
everyone is all and everyone has someone to talk to. *Harvey*

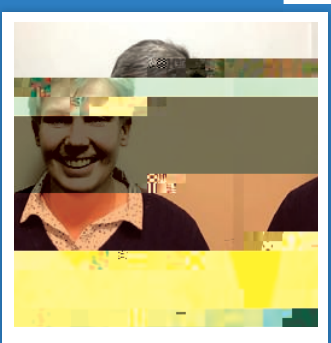
The everyone is a
reachable and
understanding. *Keet*

”

Safeguarding and Child Protection

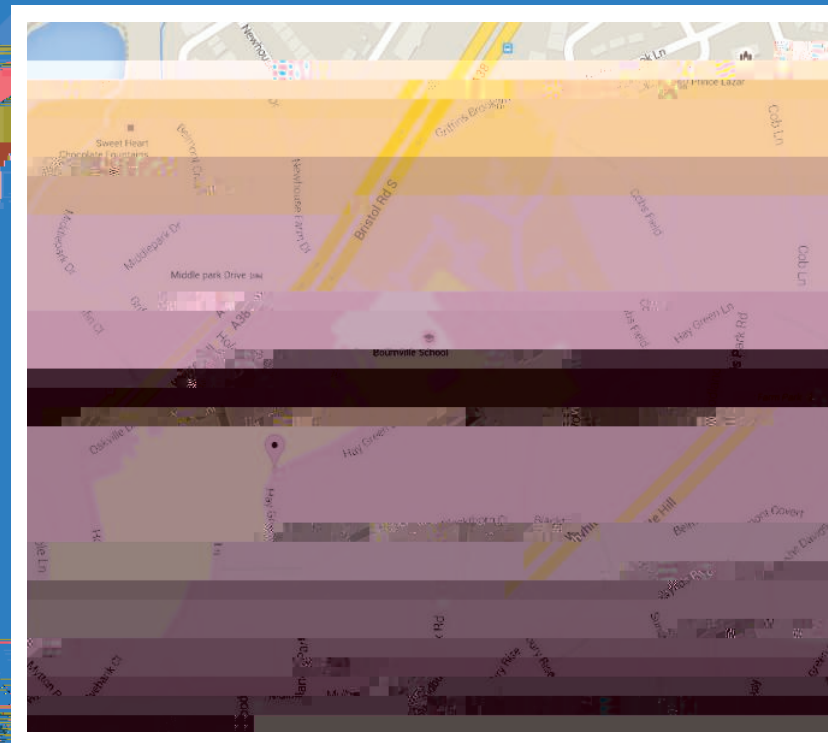
Our first priority is your child's welfare and therefore there may be occasions when our concern about your child means that we have to consult other agencies even before we contact you. The procedures we follow have been laid down by the Birmingham Safeguarding Children Board and are detailed in our Safeguarding Policy which is available on our website.

If you want to know more, or if you would like to raise a concern about any child, please speak to the Designated Safeguarding Lead.



Miss Kim Wheeler
Designated Safeguarding Lead

Contact



Miss M Rooney | Principal of Bournville School

A: Bournville School, Hay Green Lane, Birmingham, B30 1SH

T: 0121 475 3881 **F:** 0121 483 2349 **E:** post@bournville.fmat.co.uk

ENRICHING **LIVES;** TRANSFORMING FUTURES

DEDICATION.
INTEGRITY.